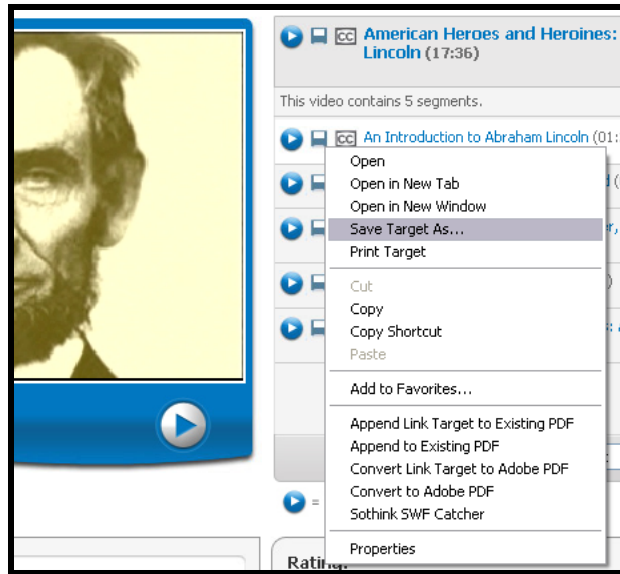


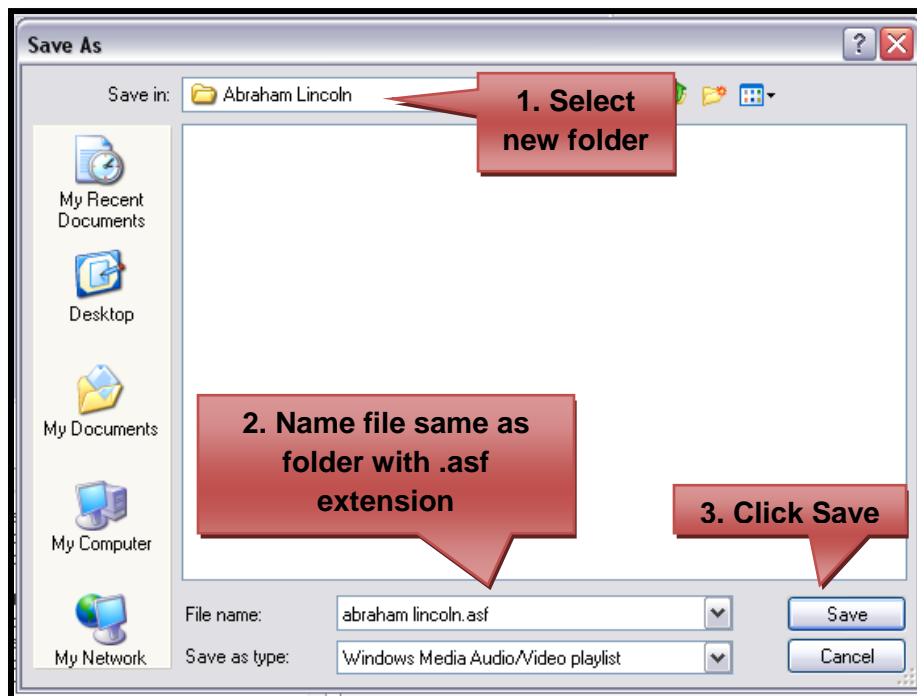
Downloading and Viewing a Closed Captioning Video

The following steps must be followed to download a closed captioning enabled video in DE streaming. The key to this is that your folder, video, and CC file must all have the same name but will have different extensions.

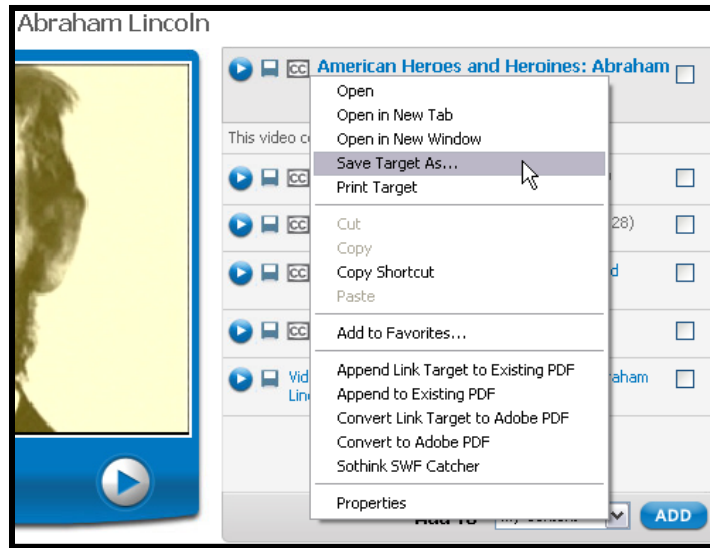
1. Create a new folder on your computer and name it the same title as your video something similar so you will remember it later.
2. On the DE site, right-click the disk icon next to the video title and select “Save Target As.”



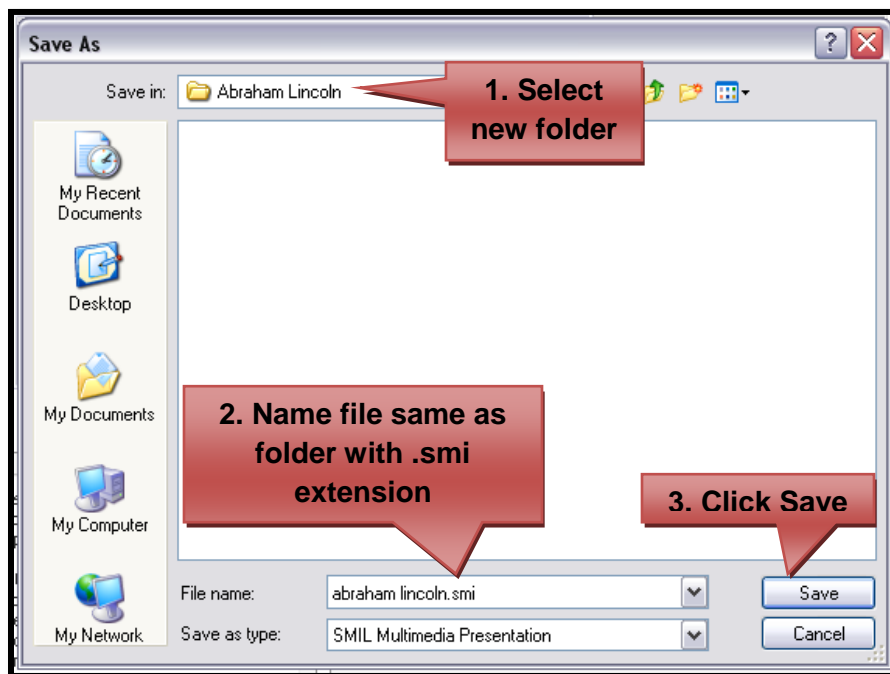
3. Save the video in the new folder created in step 1 and name the video the same as the folder. You must save the video with a .asf extension. (ex. abraham lincon.asf) Note: You will need to manually type the .asf extension, rather than select from the menu.



- Now, right-click the Closed Captioning icon next to the video title on the DE *streaming* site, select "Save Target As."



- Select the same folder used in steps 1 and 3, name the file the same as the folder and video with the extension .smi. (ex. abraham lincoln.smi)



- You should now be able to double click the video file on your computer and it will play in Windows Media Player with the Closed Captioning.

